

# Drawing



Tools for Chefs

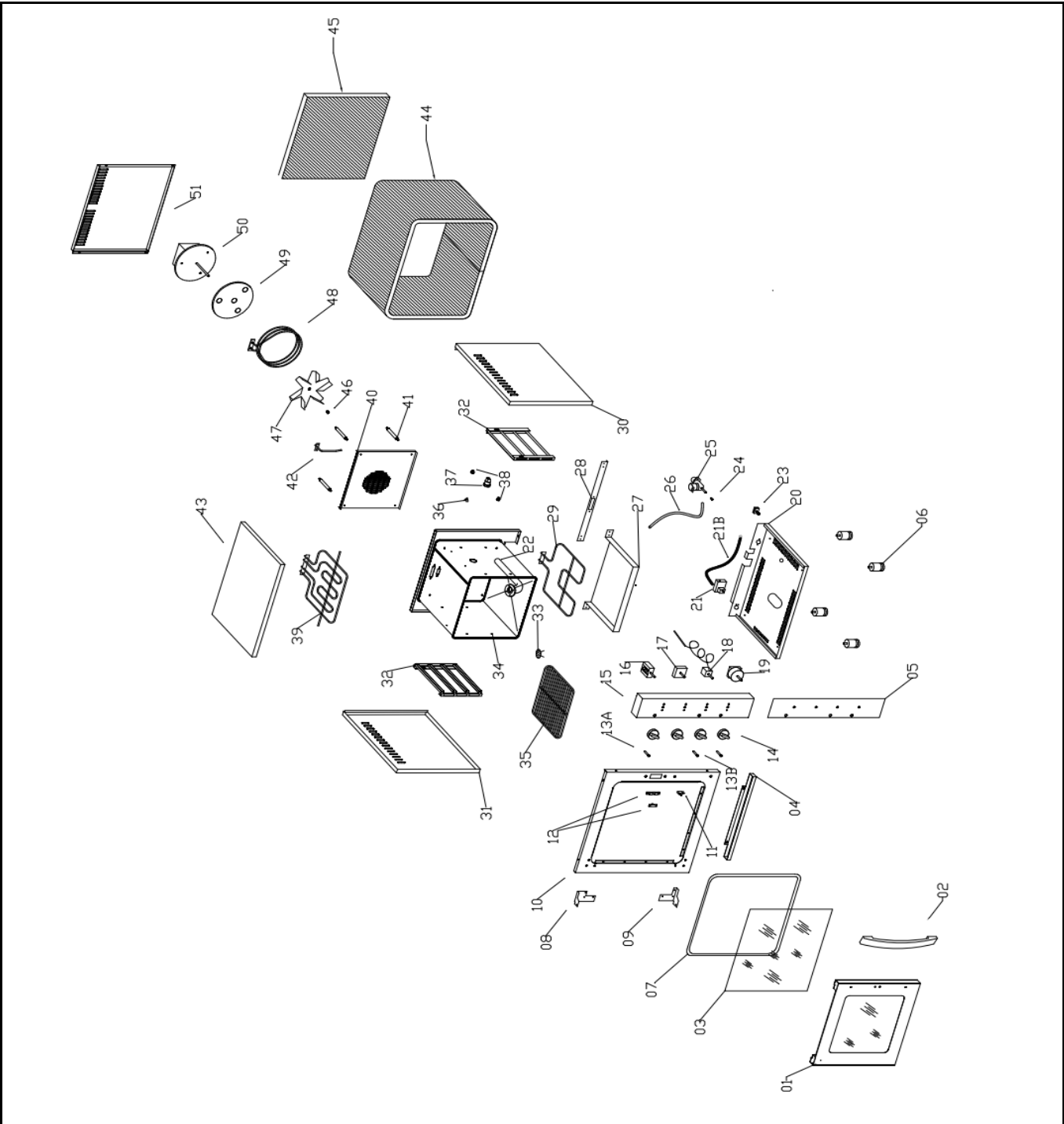
**Hendi B.V.**  
 Steenoven 21  
 3911 TX Rhenen  
 The Netherlands

**Batch #**  
 191892 and up


**Appliance part#**  
**225929**

**Description**  
 Convection steam oven with grill 4xGN 2/3

<b>Date</b>	08-10-2020	<b>Revision #</b>	Revision version
<b>Revision</b>	First bill of materials (BOM)		



### Bill of materials (BOM)

 <b style="font-size: 24px; margin-left: 10px;">HENDI</b> <span style="font-size: 12px; color: green; margin-left: 10px;">Tools for Chefs</span> <b>Hendi B.V.</b> Steenoven 21 3911 TX Rhenen The Netherlands	<b>Batch #</b>	<b>Appliance part#</b>
	191892 and up	<b>225929</b>
	<b>Description</b>	
Convection steam oven with grill 4xGN 2/3		

<b>Date</b>	08-10-2020	<b>Revision #</b>	Revision version
<b>Revision</b>	First bill of materials (BOM)		

Item	Description	Part#	Quantity	Remark	Picture
1	Complete door assembly	958261	1	Incl item 1,2 and 3	
2	Door handle	nss	1	Available as 958261	
3	Inner Glass	958278	1	Also in the 958261 assembly	
4	Drip tray	n/a	1		
5	Display sticker	n/a	1		
6	Feet	958285	4		
7	Door seal	958292	1		
8	Upper hinge	958308	1		
9	Lower hinge	958315	1		
10	Front frame	n/a	1		
11	Microswitch	958322	1		
12	Door lock	958339	1		
13a	Signal light green	958346	1		
13b	Signal light orange	950920	2		
14	Knob	958353	4		
15	Display Panel	n/a	1		
16	Switch (rotary 9 positions)	958360	1		
17	Energy regulator (humidifier)	201121	1		
18	Thermostat	947210	1		
19	Timer 120'	928868	1		
20	Bottom cover	n/a	1		
21	Terminal	958391	1		
21b	Power cord	205303	1		
23	Equipotential grounding terminal	n/a	1		
24	Flow reducer	n/a	1		
25	Watervalve 1-way	958407	1		
26	Water pipe	n/a	1		
27	Box (element)	n/a	1		
28	Bracket	n/a	1		
29	Element lower (230V 1600W)	958414	1		
30	Right side cover	n/a	1		
31	Left side cover	n/a	1		
32	Tray support (Left/right side)	958421	1		
33	Drain cover	n/a	1		
34	Oven chamber	n/a	1		
35	Grid GN2/3	801932	1		
36	Thermostat holder	n/a	1		
37	Lamp fitting complete	951194	1		
38	Bolt (tray support)	958438	4		
39	Element upper (230V 700W + 1800W)	958445	1		
40	Back cover	n/a	1		
41	Spacer	n/a	4		
42	Water inlet pipe	n/a	1		
43	Upper cover	n/a	1		
44	Insulation material (housing)	n/a	1		
45	Insulation material (back side housing)	n/a	1		
46	Nut M6	nss	1	Available as	
47	Fan	nss	1	Available as	
48	Element (round 230V 3000W)	958452	1		
49	Insulation panel	nss	1	Available as	
50	Fan motor	958469	1	Incl item 46, 47 and 49	
51	Back cover	n/a	1		

n/a -> not available

nss -> not sold separately

# Circuit diagram



**Hendi B.V.**  
 Steenoven 21  
 3911 TX Rhenen  
 The Netherlands

Tools for Chefs

**Batch #**

191892 and up

**Appliance part#**

**225929**

**Description**

Convection steam oven with grill 4xGN 2/3

**Date** 08-10-2020

**Revision #**

Revision version

**Revision** First bill of materials (BOM)

mA	Moresettera di arrivo linea / Main terminal board
B1	Selettore ciclo funzionamento / Cycle operating selector-switch
B2	Temporizzatore meccanico / Meccanic Timer
B3	Regolatore vapore / Steam adjustment
C	Resistenza Circolare 3000W
D1	Micromeruttore porta / Door microswitch
F1	Termostato camera cottura / Cooking chamber thermostat
F2	Termostato sicurezza camera / Chamber safety thermostat (Cilison)
G	Grill / Electric grill 1800W
H1-3	Lampade spia / Pilot light
HL	Lampada illuminazione camera / Cooking chamber
MT	Motore / Motor
R1	Resistenza Suola 1600W
R2	Resistenza Cielo 700W
SV2	Elettrovalvola acqua ciclo misto / Water solenoid-valve for combination cycle

	P2-4	P1-3	PE-1	PE-2	PE-7	PA-6	PA-5	
0								SPENTO
1	X							LUCE
2	X	X	X					STATOO
3	X	X	X					SUOLA
4	X							CIELO
5	X	X						GRILL
6	X	X						GRILL VENTILATO
7	X	X	X	X				STATOO VENTILATO
8	X							CIRCOLARE
9	X							RAFFREDDAMENTO

Raffreddamento con acqua a porta chiusa

